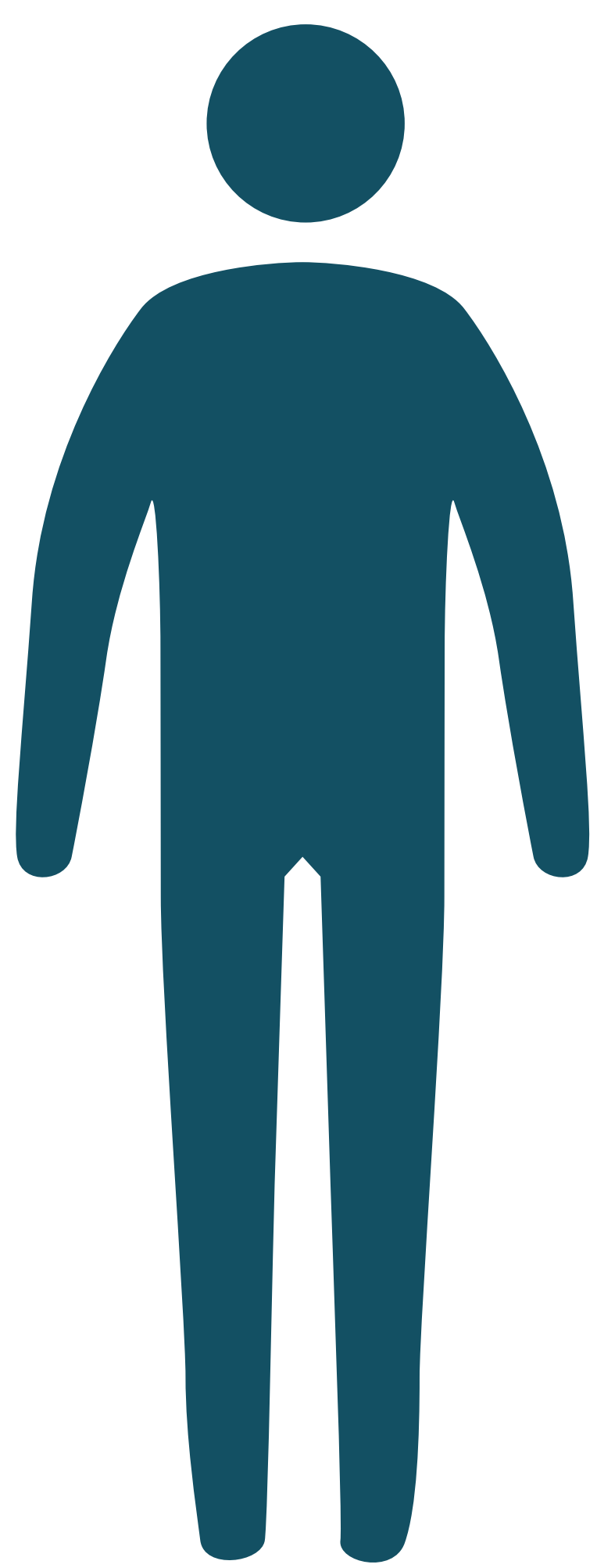


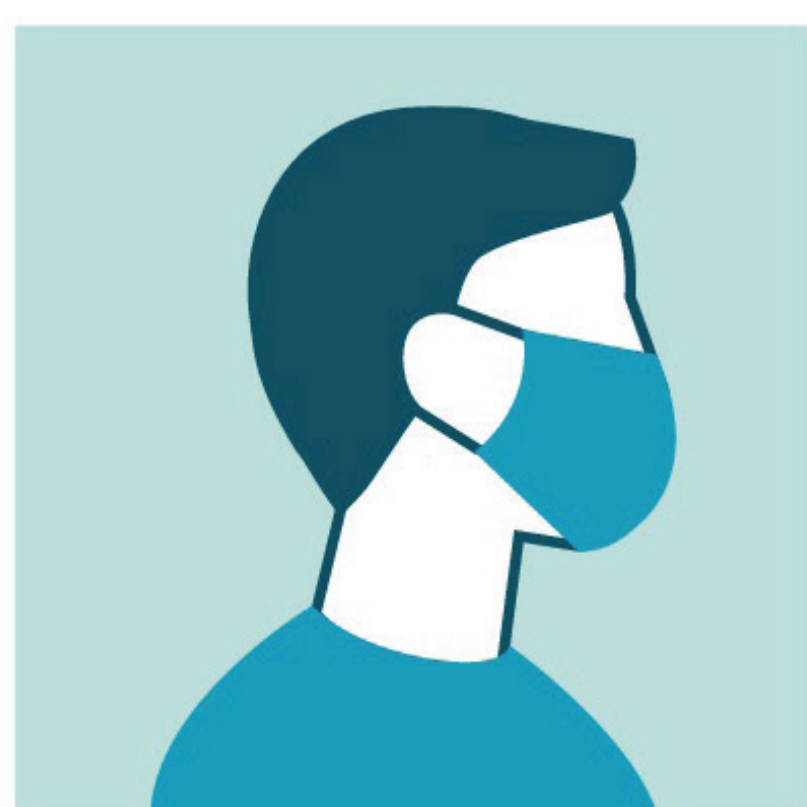
TEMPORARY EMERGENCY DEPARTMENT VISITOR GUIDELINES

FOR THE SAFETY OF OUR PATIENTS,
STAFF AND VISITORS.

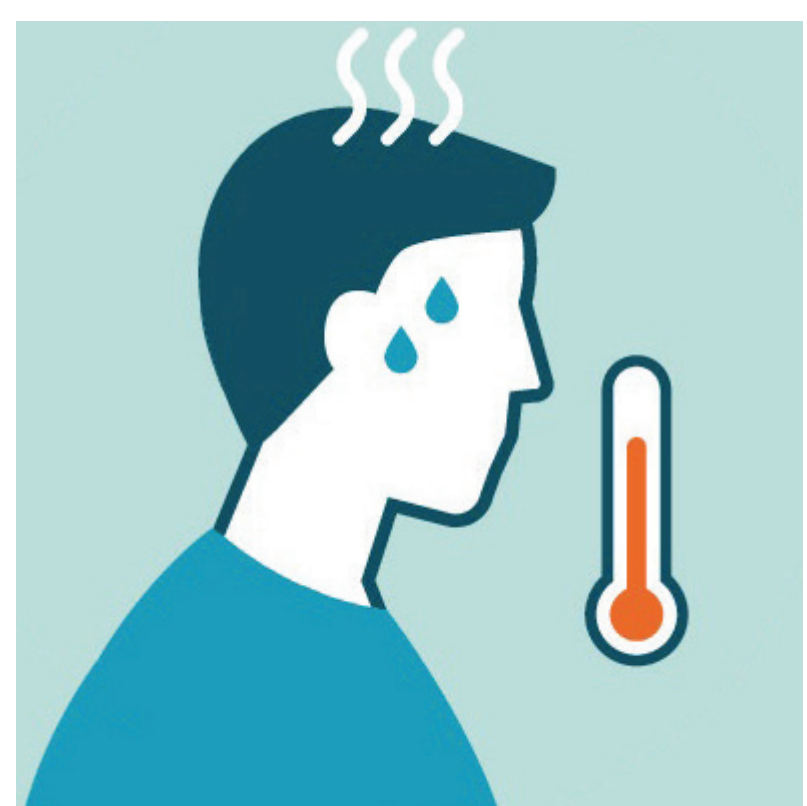


ONE VISITOR

Only **One** healthy adult visitor over the age of 18 may stay with the patient during their hospital visit.



MASK MUST BE
WORN AT ALL TIMES.



VISITOR MUST SCREEN
NEGATIVE.



SANITIZE HANDS.



BAPTIST HEALTH®

HARDIN